



mPhase Technologies, Inc.
150 Clove Road
Little Falls, NJ 07424

OTCBB
XDSL

Investor Information

Ticker Symbol
OTCBB: XDSL

CUSIP Number
62472C102

Reporting Status
SEC Reporting Company

Recent Share Price
\$.022

52 Week High / Low
\$.049 / \$.01

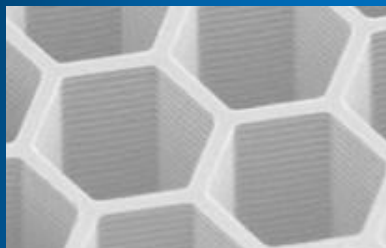
Authorized Shares
2,000,000,000

Outstanding Shares
1,103,089,650

Estimated Market Cap
\$ 24.49 MM

Transfer Agent
Jersey Transfer & Trust Co.
201 Bloomfield Ave.
Verona, NJ 07044

Chief Executive Officer
Ronald A. Durando



Why Invest in mPhase Technologies?

mPhase Technologies is a leader in the field of nanotechnology, particularly as it applies to reserve power sources. Up until this point, mPhase has targeted its resources towards developing products for the military, particularly the electronic defense industry. In fact, they have been awarded several grants from the U.S. Government to apply this technology to national defense. Currently, mPhase has more than ten patents either issued or pending involving this innovative technology.

mPower is a 100% wholly owned division of mPhase Technologies, The mPower On Command™ Reserve Battery has completely revolutionized the concept of battery life. Battery technology had not really changed much in 150 years. But thanks to breakthrough innovations, mPhase has created the first battery that provides Power On Command™ - a battery with a near infinite shelf life. This is accomplished through proprietary technology that relies on the integration of engineered components and separation of chemicals.

mPower is now making this breakthrough technology available to consumers through a suite of products that are sure to revolutionize the electronics and battery industries.

Designed by Porsche Design Studio of Zell am See, Austria, and manufactured by MKE of Austria, the mPower Emergency Illuminator is a precision instrument with a powerful 180 Lumens LED and two separate battery tubes. One tube is for everyday use and holds two CR123 batteries, while the other tube holds mPhase's Power On Command(TM) Reserve Battery . If the regular CR123 batteries run down, the Reserve Battery takes over -- even after laying idle for 20 years. The Emergency Illuminator also features a USB port, that can be used for charging portable devices such as a cell phone.



For more information, please visit www.mpowertech.com

Disclaimer: Certain statements in this news release may contain forward-looking information within the meaning of Rule 175 under the Securities Act of 1933 and Rule 3b-6 under the Securities Exchange Act of 1934, and are subject to the safe harbor created by those rules. All statements, other than statements of fact, included in this summary, including, without limitation, statements regarding potential future plans and objectives of the company, are forward-looking statements that involve risks and uncertainties. There can be no assurance that statements will prove to be accurate and actual results and future events could differ materially from those anticipated in such statements.